



1 Fishers Close, Littlehampton BN17 6PX
£450,000 Freehold

**HAWKE &
METCALFE** 
INDEPENDENT ESTATE AGENTS

INDEPENDENT ESTATE & LETTING AGENTS

- Detached Bungalow
- 2/3 Bedrooms
- No Onward Chain
- Refitted Kitchen & Shower Room
- Additional Separate WC
- Close to Mewsbrook Park & Seafront
- Private Drive & Garage
- Council Tax Band 'D'
- EPC Rating 'TBA'

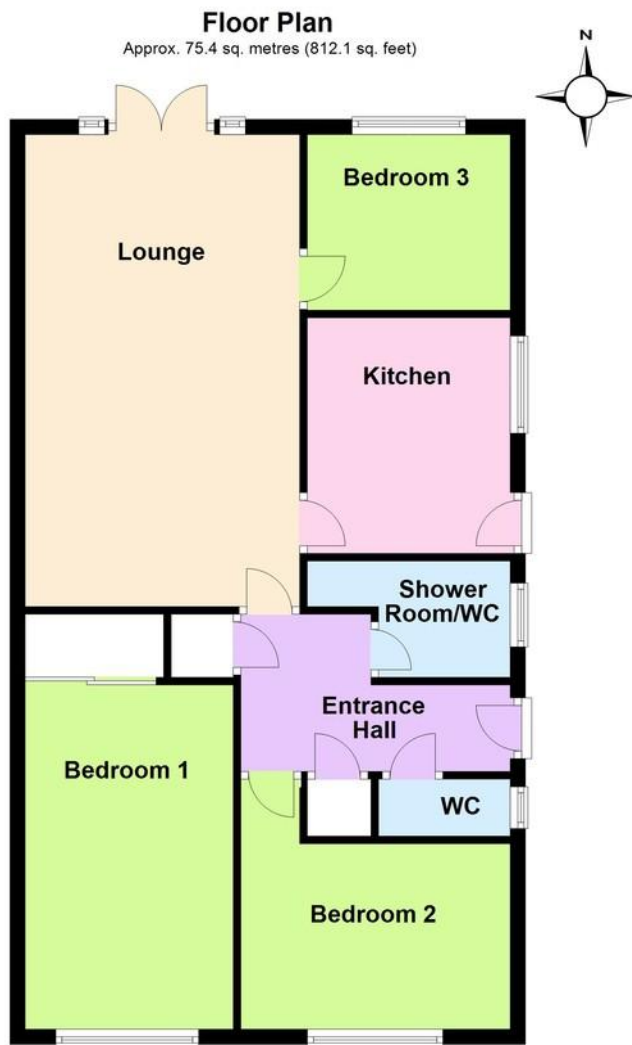
A detached bungalow offered for sale with no onward chain and pleasantly located in South Beaumont, close to Mewsbrook Park and the seafront.

In brief the accommodation comprises: - Entrance hall, spacious lounge, kitchen, bedroom three/dining room, two bedrooms, shower room/WC and additional separate WC. Outside there are gardens to the front and rear along with a private drive to the garage.

Features include gas central heating, double glazing and no onward chain.

Fishers Close is situated mid-way between Rustington and Littlehampton and is off Fairway which in turn runs off Tideway. Mewsbrook Park and the seafront are only a short walk away.





Total area: approx. 75.4 sq. metres (812.1 sq. feet)

ENTRANCE HALL

LOUNGE

20' 4" x 12' (6.2m x 3.66m)

KITCHEN

10' 1" x 8' 9" (3.07m x 2.67m)

BEDROOM 1

14' 10" x 9' (4.52m x 2.74m)

BEDROOM 2

11' 8" x 8' (3.56m x 2.44m)

BEDROOM 3/STUDY

8' 9" x 7' 7" (2.67m x 2.31m)

SHOWER ROOM/WC

ADDITIONAL SEPARATE WC

PRIVATE DRIVE

GARAGE

FRONT & REAR GARDENS

**EPC TO
FOLLOW**



01903 850450

**90 THE STREET, RUSTINGTON, WEST SUSSEX,
BN16 3NJ**

sales@hawkemetcalf.co.uk

www.hawkemetcalf.co.uk

